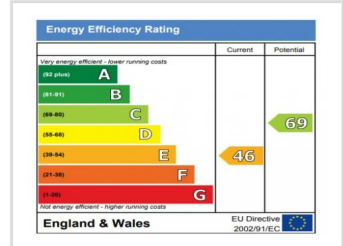
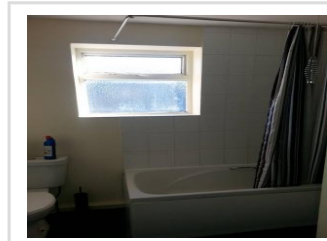


2 BED TERRACE HOUSE - ROTHERHAM

Large 2 x double-bed sized terraced house for rent on Sandymount Road, Wath-upon-Dearne.



Sandymount, Wath-upon-Dearne, Rotherham, South Yorkshire, S63 7AD

- Gas central heating throughout
- newly decorated through out
- Private rear garden
- Fully fitted kitchen w integrated oven, hob, extractor
- Separate dining room

£440 Monthly

Zed Lettings
1 Central Buildings
Adwick Road
Mexborough
South Yorkshire
S64 0BP



Zed Lettings

Residential & Commercial Property Management

For further information / advice or
to arrange a viewing please call :

01709 468244

Application Fee (up to 4 Tenants - inc Guarantor if required):
£180 (inc VAT)

SANDYMOUNT, WATH-UPON-DEARNE, ROTHERHAM, SOUTH YORKSHIRE, S63 7AD

This two bed terraced house must be viewed internally to appreciate the massive internal space on offer. Close to local bus routes, primary school and within easy walking distance of Wath town centre and major shopping outlets.

Going in through the front door to a large lounge with light oak laminate flooring and feature fireplace/TV areas. Neutral cream walls and brass/glass shade to ceiling.

Carpeted stairs leading to first floor landing.

Large dining Room/kitchen with tiled floor to kitchen area which has a good range of limed oak farmhouse style kitchen units and integrated gas hob, cooker and extractor. Splashback tiling to all worktop areas and plumbing for washing machine.

Dining area has fire set inside a feature stone fireplace and laminate to floor.

Landing with a built in storage cupboard.

Bathroom with white three piece suite consisting of a panelled bath with shower over, pedestal hand wash basin and push button wc, central heating radiator, tiled floor and partially tiled to walls.

Very large double bedroom with two central heating radiators and two front facing single glazed windows.

Bedroom 2 with a built in storage cupboard, central heating radiator and single glazed windows to side and rear elevations.

New modern bathroom being fitted prior to new tenant.

Rear Garden is an enclosed private garden with lawn.

Lovely quiet location close to bus route, primary school and local shops.