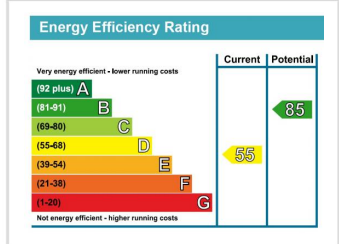
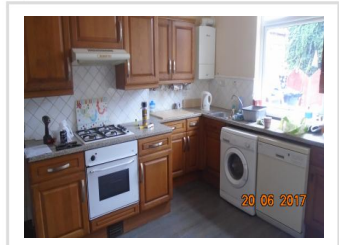
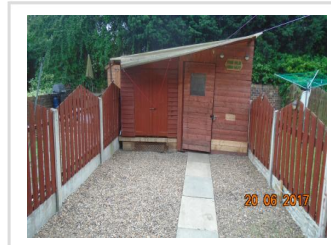


3 BED TERRACE HOUSE - ROTHERHAM

3 bed terraced house for rent in Wath-upon-Dearne



Hollowgate Avenue, Wath-upon-Dearne, Rotherham, South Yorkshire, S63 6DT

- UPVC windows and doors
- Gas central heating throughout
- Private rear enclosed garden
- Wood
- Modern, white 3 piece bathroom suite with overbath shower
- Large attic bedroom
- Good sized kitchen with integrated hob, oven and extractor

£480 Monthly

Zed Lettings
1 Central Buildings
Adwick Road
Mexborough
South Yorkshire
S64 0BP



Zed Lettings

Residential & Commercial Property Management

For further information / advice or
to arrange a viewing please call :

01709 468244

HOLLOWGATE AVENUE, WATH-UPON-DEARNE, ROTHERHAM, SOUTH YORKSHIRE, S63 6DT

Having a small pavement frontage, UPVC windows and doors, with gas central heating throughout, this 3 bed terraced house for rent in Wath-upon-Dearne additionally comprises:

Good sized lounge with modern wall-hung electric fire to chimney breast.

Large kitchen diner with a large range of farmhouse pine kitchen units and integrated cooker, hob and extractor. Laminate to floor and tiled areas to all worktop areas.

Bathroom with modern white wc and integrated sink unit with storage cupboard underneath. Shower cubicle with power shower and glass shower screen.

To upstairs is a double bedroom built in wardrobes, carpet to floor and neutral cream walls.

Good sized single bedroom with built in wardrobes and carpet to floor and neutral walls.

Large attic bedroom conversion with neutral plastered walls and charcoal carpet.

Low-maintenance gravelled private rear garden with a large outside chalet, having a bar with laminate flooring and large potting shed/work area.