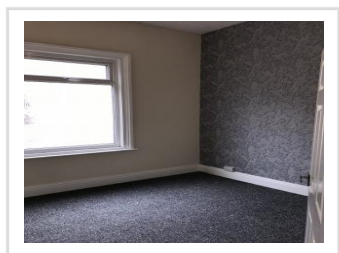
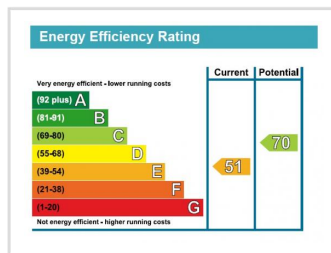
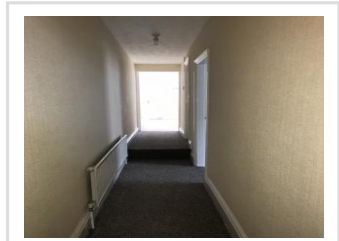


2 BED FLAT - ROTHERHAM

This flat for rent in Wath-upon-Dearne is conveniently located above commercial premises on Wath High Street, and with easy access to all central Wath amenities and shops. With its own private entrance to the rear of the building, this flat provides a compact, easy to maintain 2 bedroom accommodation.



High Street, Wath-upon-Dearne, Rotherham, South Yorkshire, S63 7QQ

- UPVC Double Glazing
- Central heating throughout
- Fully fitted light oak kitchen units with cooker and fridge/freezer
- Shower enclosure and electric shower
- Spacious lounge overlooking central Wath
- Fully carpeted throughout

£400 Monthly

Zed Lettings
1 Central Buildings
Adwick Road
Mexborough
South Yorkshire
S64 0BP



Zed Lettings

Residential & Commercial Property Management

For further information / advice or
to arrange a viewing please call :

01709 468244

Application Fee (up to 4 Tenants - inc Guarantor if required):
£180 (inc VAT)

HIGH STREET, WATH-UPON-DEARNE, ROTHERHAM, SOUTH YORKSHIRE, S63 7QQ

This centrally located flat for rent in Wath-on-Deerne briefly comprises of a range of beech-coloured kitchen units and a cooker. Practical lino to the floor.

Off the kitchen, there is a shower room with new white fittings and an electric shower and enclosure.

Two good sized bedrooms will take a double bed in each - with new carpet to largest and new doors.

The lounge is light and airy and comes with carpets and metal light fitting.

The windows are all double glazed and the property is central heated throughout.

The property is not suitable for people with pets (dogs or cats) but DSS tenants are welcome.